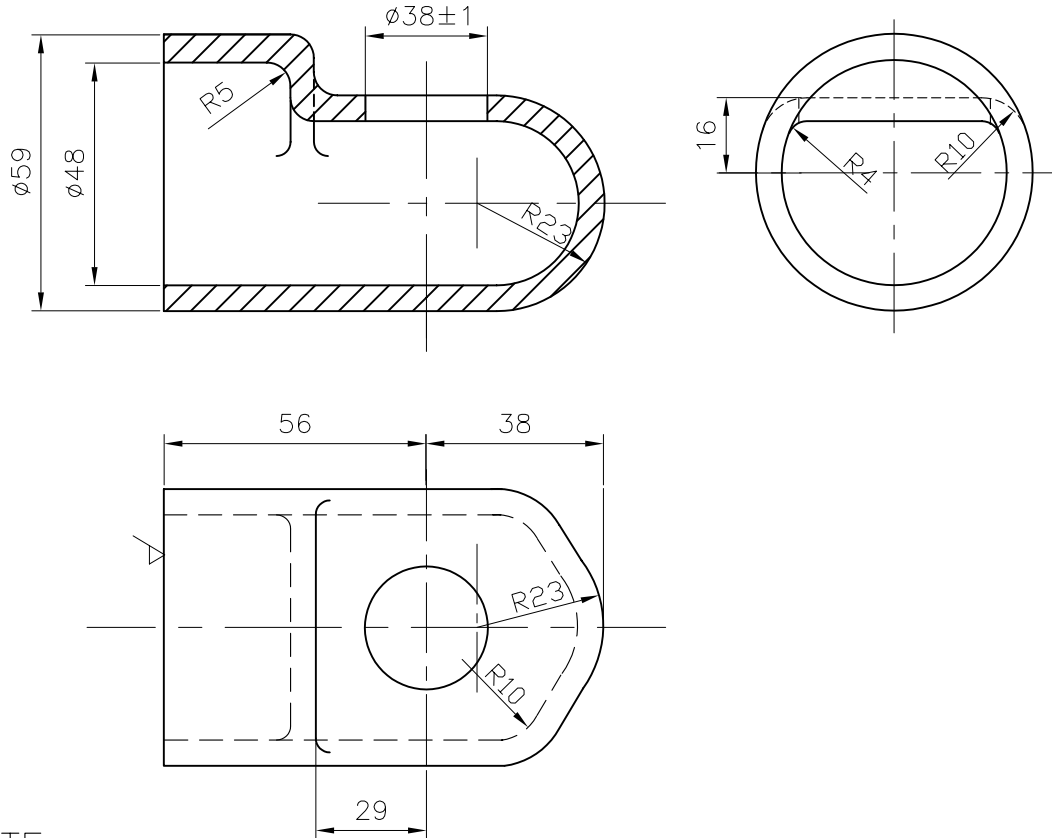


ALL DIMENSIONS ARE IN MILLIMETRES.

FOR TOLERANCES OF UNTOLERANCED DIMENSIONS DURING MANUFACTURE REFER RELEVANT QCP/QP


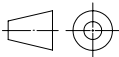
REV	DATE	ALTERED	K.S
02	9.11.04	CHD & APPD	S.N
DRAWING REDRAWN.			
DCN.NO: 800386			



NOTE:—

- ✓ INDICATES THE SURFACES TO BE MACHINED.
- DIMENSIONAL DEVIATIONS FOR CASTING SHALL BE AS APPLICABLE TO STEEL CASTINGS.
- FOR MACHINING DRAWING REFER 4-20-201-00162.
- FOR QUALITY REQUIREMENTS REFER LATEST APPLICABLE QUALITY PROCEDURES.

PART CODE: 920059630000

		920059630000	A297 Gr HH		0.8					
NO OFF	DESCRIPTION	MATL CODE	MATL SPECN	HEAT TREATMENT	SCRAP SORT	NET WT (kg)	GROSS WT (kg)	DRAWING No	ITEM No	
<div> 365-122</div> <div><b>BHARAT HEAVY ELECTRICALS LTD.,</b> UNIT: HIGH PRESSURE BOILER PLANT. TIRUCHIRAPALLI 620014.</div>					DRN	NAME S.NAPPI	SIGN S.N	DATE 9.11.04	NO.OF VAR	
					CHD	K.SRIDHARAN	K.S	9.11.04		
					APPD	S.NATARAJAN	S.N	9.11.04		
DEPT VL			SCALE  NTS	WEIGHT (KG).  0.8	REFERENCE INFORMATION				NO. OF ITEMS	
CODE										
TITLE  NOZZLE HEAD CASTING					CARD CODE  U 01	DRAWING NO.  4-20-201-0068102				REV